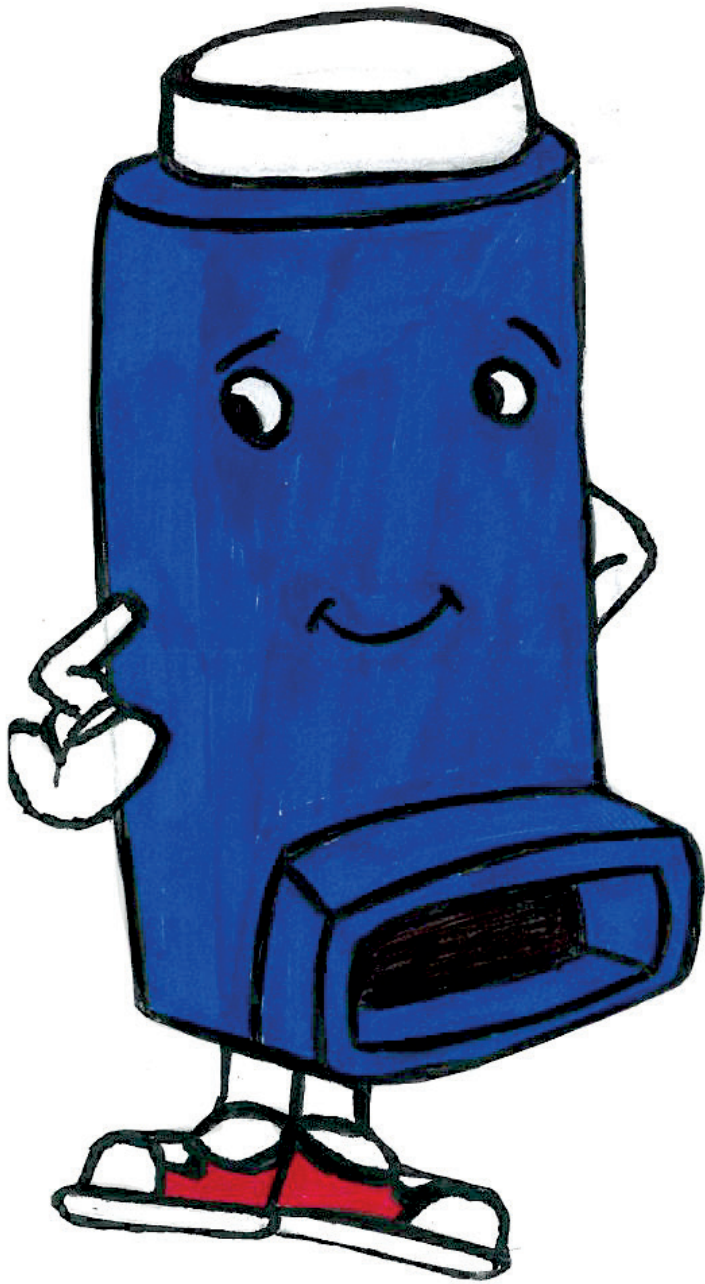




ASTHMA



What is Asthma?

Asthma is a disease affecting the lungs and the airways that carry air to and from the lungs.

What causes Asthma?

One of the main causes of Asthma is spraying cars. If you don't wear an air fed mask your lungs are taking in all the over spray



Signs of Asthma?

- Wheezing
- Shortness of breath
- Tight chest
- Violent coughing

